



I'm a DXer
I CQ DX
I chase DX
I work DX
I QSL DX
I DX

Presentation written by Norm
W4QN.

Revised By Dave N3BUO For
Hamcom 2015

N3BUO



LoTW
eQSL
Clublog

DXCC Award	New LoTW QSLs	LoTW QSLs in Process	DXCC Credits Awarded	Total (All)	Total (Current)
Mixed	194	0	0	194	193
CW	75	0	0	75	74
Phone	178	0	0	178	177
Digital	132	0	0	132	131
160M	10	0	0	10	10
80M	73	0	0	73	72
40M	102	0	0	102	101
30M	8	0	0	8	8
20M	143	0	0	143	142
17M	63	0	0	63	63
15M	146	0	0	146	145
12M	71	0	0	71	71
10M	138	0	0	138	137
6M	1	0	0	1	1
Challenge	750	0	0	---	750

* = Award has been issued

Better Dxing Through Software

Hamcom 2015

the DXLab Suite

Developer- Dave Bernstein
AA6YQ

Note, many slides are courtesy of
Dave AA6YQ

Presented by – Dave N3BUO

the DXLab Suite

Developer- Dave AA6YQ

Eight free applications that run individually

but

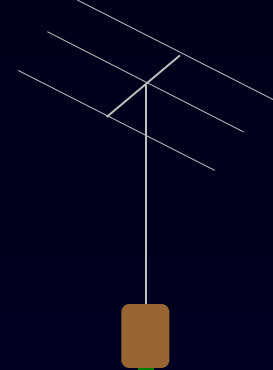
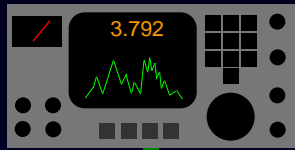
when run simultaneously sense each other's presence

and

Inter-operate automatically

Better DXing Through Software

Modular Architecture



- **Supports These Functions**
- **Coordinated architecture**

Transceiver Control

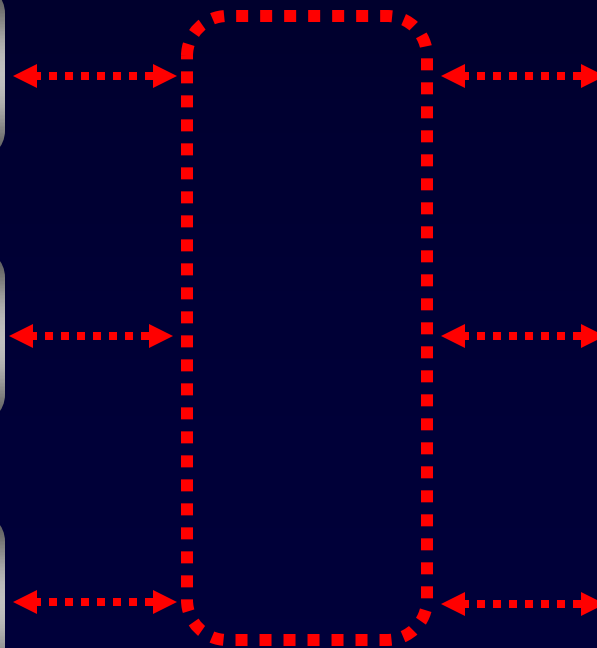
Location Control

Logging

DX Spot Collection

Propagation

QSL Routes



Support for Digital Modes



CW, RTTY, PSK
WinWarbler

Transceiver Control
Commander

Logging
DXKeeper

Propagation
PropView

Location Control
DXView

DX Spots
SpotCollector

QSL Routes
Pathfinder

DX Atlas

Google Earth

SpotSpy

CW Skimmer

DM780

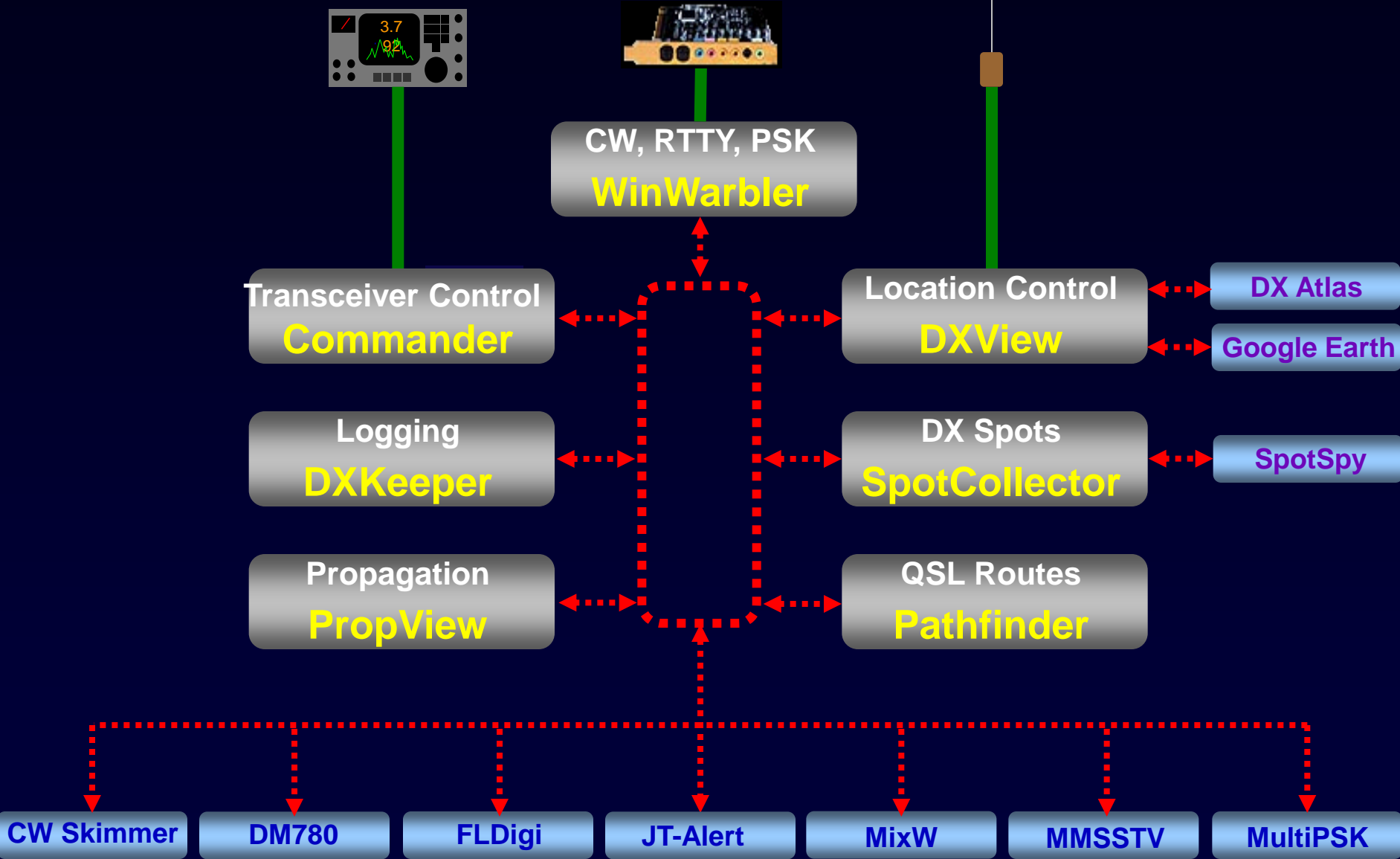
FLDigi

JT-Alert

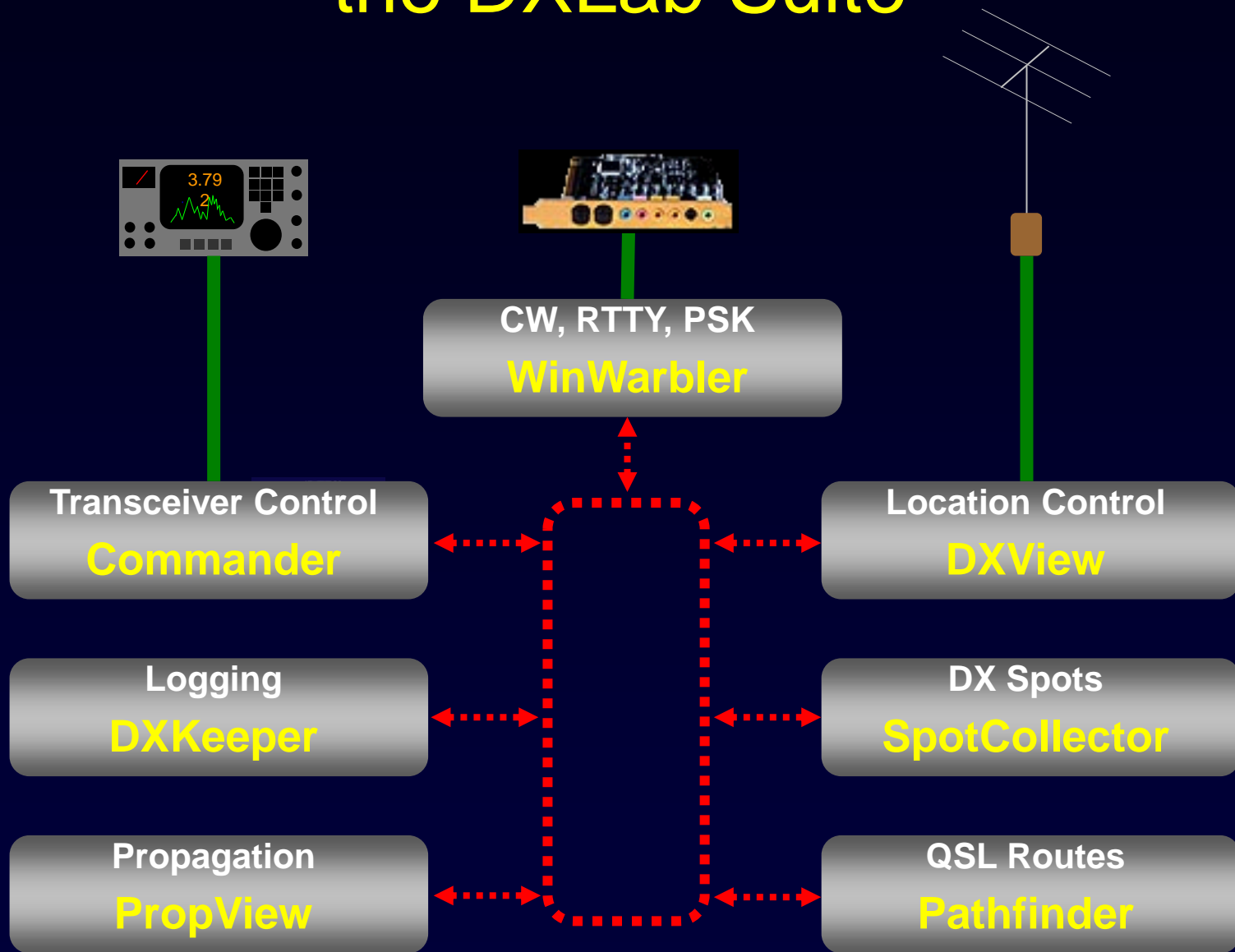
MixW

MMSSTV

MultiPSK



the DXLab Suite



Result- Suite of Interoperating DXing Applications

DXKeeper 5.7.1 [CC.DXV.SC.WW] - AA6YQ.mdb : 16810 QSOs

Log QSOs

QSO: Montenegro
call: 406DX name: QTH: mode: SSB via: freq: 7.213 begin: 2006-08-18 00:26:57 sent: 59 rcvd: 59 DXCC: YU6 band: 40M end: 2006-08-18 00:26:57

Call	DXCC	Starting UTC	Band	Mode	Sent	Rcvd	Name	QSL R
OM3PC	OM	2006-08-13 01:10:33	30M	Cw	579	599	Rudi	
OK2PBF	OL	2006-08-14 07:45:55	20M	Cw	559	559	Mila	
DL2DX	DL	2006-08-14 07:50:01	20M	Cw	599	599	Joe	
403ES	YU6	2006-08-16 22:52:21	40M	RTTY	599	599		
403AB	YU6	2006-08-17 02:00:52	40M	RTTY	599	599		
406DX	YU6	2006-08-17 18:21:15	17M	Cw	599	599		

Logging

SpotCollector 3.5.3 @ 2006-08-22 17:07 Z [CC.DXK.DXV.WW] (log: AA6YQ.mdb)

WWV 08:22 1507z

Outgoing spot

Callign	Pfx	Freq	QSQ	Mode	FirstTime	LastT	Notes	Source
SV3/SV1VS	SV	14,091.5		RTTY	22 1009	1031	rtty IOTA eu158	EA5YJ
PY2XB	PY	7,005.0		CW	22 1009	1034	CQn. FB Sig	JA4FKX
DA0DD	DL	14,081.9		RTTY	22 1027	1036		EA5YJ
DUS/NONM	DU	1,828.3	1,827.2	Cw	22 0952	1037	Some signal between cras DU	W9UCW
PSK31	PY	14,070.0		Cw	22 1039	1039		IK1KDD @
W8JI	K	1,824.5		CW	22 1039	1039	w/vk3zl K	W0FLS
W4G0VP	K	7,070.0		PSK	22 1042	1042		VK2TMG
SV8RX	SV	14,071.5		PSK	22 1002	1044		G4UCJ

Spotting

DXView World Map 2.6.8 @ 22-Aug-2006 17:06 Z (QTH: 42 23' N, 71 22' W, ...)

Location

WinWarbler 4.5.1 for AA6YQ @ 22-Aug-2006 17:07Z [CC.DXK.DXV]

QSO Info (Receive Pane 2)

Call: ? Name: Grid: Xcwr Freq: 14,070.00

QSO Log

```
..... RW4HUF de ON5GD  
tnx dear Bugeny for my rst 599 in SAMARA  
My equipment (toys) is :  
TRX: Yaesu FT-1000MP, 30w HP  
ANT: 7 ele  
  
ot-o ,,tWe dt woee0.) $ttAX HPE CU AGN 73  
QSL 100/100 via bureau  
Best regards from Belgium  
22 Aug 2006 17:01:11z  
RA9CDW de ON5GD sk  
t  
UN7PHVJWP 8  
UN7P  
  
CQ DQ CQ DE IV3LBP IV3LBP IV3LBP PSE K d elt eeo a rle g ^ tt  
t e  
ras wBe D &reee bxto s o 2RMC Pi fp-1 a ei oeOwDL2MC DE HA5KHA5KN m  
U12IJ p^ 599 59- OAU6J DE OY/DL2r fcol  
ZIO p4 u
```

Digital Control & Logging

Commander 5.9.5 [com IC-781] @ 17:07:42 14,070.00 USB

VFO A: 14,070.00

VFO B: 3,509.00

Filters: Group

Mode: USB

Bandspread: 15 12 10 6 4 2 .7

Msgs: Scan Memory Banks Config Help

RX/TX Control

Commander Range

Range: 1 5 10 25 50 100

Band: 160 80 60 40 30 20 17 15 12 10 6 4 2 .7

Spotcollector Config Help

Band Spread

Macros: psk

Receive Channel 2 (BPSK31 USB)

Transmit (BPSK31 USB)

Tuning Display

14070 14071 14072 14073

Dual Monitor Display

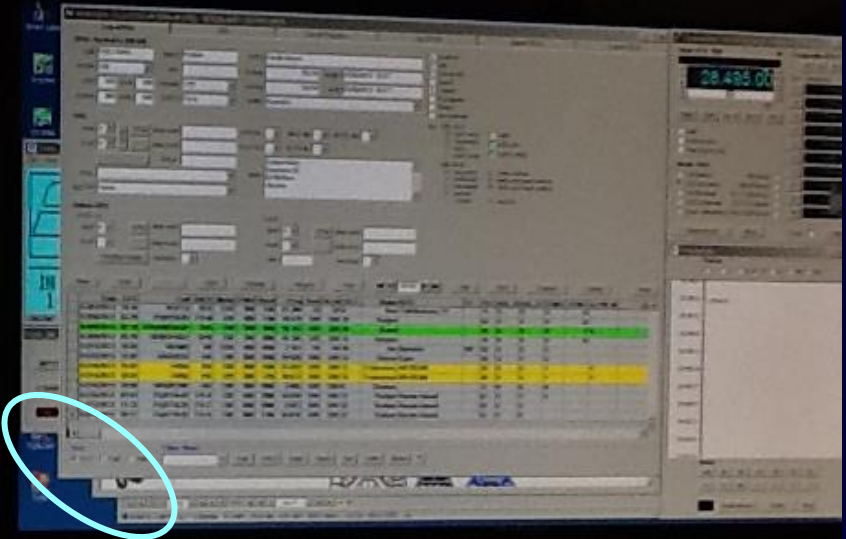
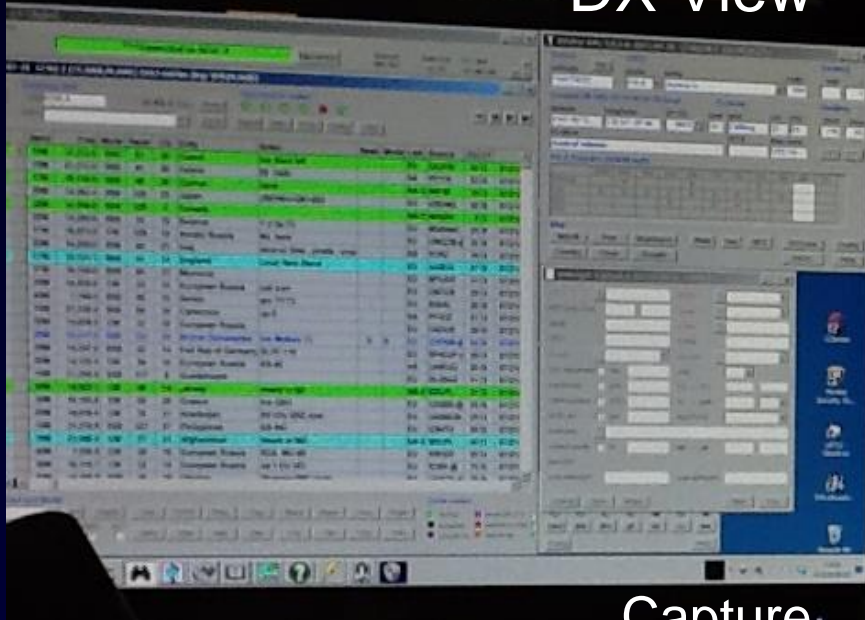
My solution a
Pair of 24" monitors

SpotCollector

DX View

DX Keeper

Commander



Capture
Launcher

Pathfinder
DX Map

Band
Spread

- Applications 'stacked'
(right monitor)



LoTW
eQSL
Clublog

We have seen how
DXLAB is organized,

Now how do we use it?

DXLab: *Down load DX “Launcher”* *dxlabsuite.com/*

Downloading and Installing DXLab Applications

[Getting Started with DXLab](#)

[Availability Announcements](#)

[Distribution Sites](#)

[Documentation](#)

[Bridges, Gateways, and Extenders](#)

[DXLab Reflector](#)

[Articles and Presentations](#)

Its Free



Before installing your first DXLab application, install the Launcher

The [DXLab Launcher](#) automates the installation of new DXLab applications and the upgrading of already-installed DXLab applications. If you're an aspiring DXLab user who has not installed any DXLab applications on your PC, or if you're a long-time DXLab user who has never installed the Launcher, then installing the Launcher will make it easy to install new DXLab applications and keep them up to date as upgrades are released. Clicking the **Install Launcher** button below will download and install the DXLab Launcher on your PC. Step-by-step guides to installing the Launcher are available in [HTML for browsing](#) and in [PDF for printing](#).

Do not click the **Install Launcher** button if the Launcher is already installed on your PC. If you're not sure, [here's how to check](#).

If your PC is running Vista or Windows 7, [login to the account named Administrator](#) before clicking the **Install Launcher** button below.

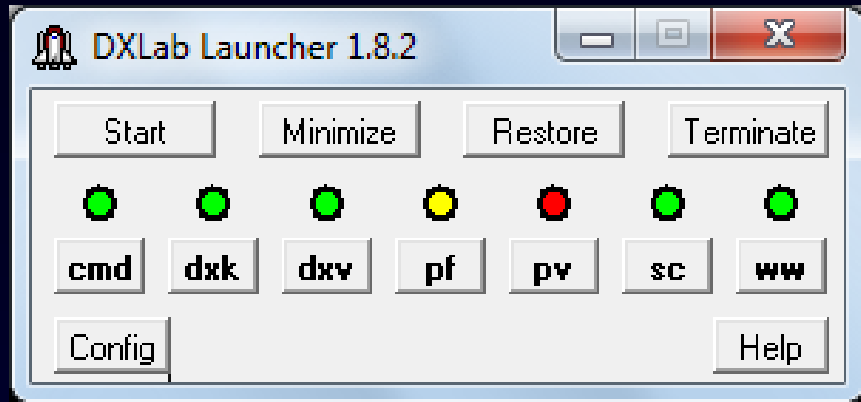
Install Launcher



For Help:

<dxlab@yahoogroups.com>

Single Point of Control: DXLab Launcher



Performs

- Installation
- Upgrade
- Startup
- Shutdown

**Do down load all Modules via the Launcher.
They will all be located in a DXLAB directory.**

It is recommended to NOT locate DXLab in the 'Program' Directory because of permission issues

This is a Windows Application

Single Point of Control



- May be Auto Starting on PC Boot
- Or Manual open (from icon on desktop)
- Individual Function Selection
- Status indicators –
 - Green – Open
 - Yellow – Minimized
 - Red Closed

Automated Installation and Updates: Programs



A reason to do manual module selection

Choosing to upgrade at this stage is recommended

Automated Installation and Updates: Programs

DXLab Launcher Configuration [test2] - new releases available

Auto Start Minimize After Start Check for New on Start Use Dual Monitors **New ?**

Always On Top Shutdown After Terminate Log Debugging Information

Distribution site: DXLabSuite

Browser pathname:

DXLab Applications

Application	Enab	Program Path	Installed	Avail	Action	Registry
Commander	<input checked="" type="checkbox"/>	C:\Program Files\DXLab Suite\CI-V Commander\CI-V Commander.exe <input type="button" value="Sel"/>	7.2.3	7.1.9	Restore	Sv Ld
DXKeeper	<input checked="" type="checkbox"/>	C:\Program Files\DXLab Suite\DXKeeper\DXKeeper.exe <input type="button" value="Sel"/>	7.0.7	7.0.6	Restore	Sv Ld
DXView	<input checked="" type="checkbox"/>	C:\Program Files\DXLab Suite\DXView\DXView.exe <input type="button" value="Sel"/>	3.0.0	3.0.2	Upgrade	Sv Ld
Launcher	<input checked="" type="checkbox"/>	C:\Program Files\DXLab Suite\Launcher\DXLabLauncher.exe <input type="button" value="Sel"/>	1.5.7	1.5.5	Restore	Sv Ld
Pathfinder	<input type="checkbox"/>	C:\Program Files\DXLab Suite\Pathfinder\Pathfinder.exe <input type="button" value="Sel"/>	4.4.9	4.4.9	Restore	Sv Ld
PropView	<input type="checkbox"/>	C:\Program Files\DXLab Suite\PropView\PropView.exe <input type="button" value="Sel"/>	1.4.6	1.4.6	Restore	Sv Ld
SpotCollector	<input checked="" type="checkbox"/>	C:\Program Files\DXLab Suite\SpotCollector\SpotCollector.exe <input type="button" value="Sel"/>	4.6.2	4.6.2	Restore	Sv Ld
WinWarbler	<input type="checkbox"/>	C:\Program Files\DXLab Suite\WinWarbler\WinWarbler.exe <input type="button" value="Sel"/>	5.8.8	5.8.7	Restore	Sv Ld

Startup parameters: DXKeeper Log

Other Applications

Application	Enab	Program Path	Installed	Start Minimized	Workspaces
MMD	<input type="checkbox"/>	Start C:\Program Files\DXLab Suite\MMD\MMD.exe <input type="button" value="Sel"/>	?	<input type="checkbox"/>	Reset
MULTIPSK	<input type="checkbox"/>	Start C:\Program Files\MultiPSK\MULTIPSK.exe <input type="button" value="Sel"/>	?	<input type="checkbox"/>	Error Log
MixW2	<input type="checkbox"/>	Start C:\Program Files\MixW\MixW2.exe <input type="button" value="Sel"/>	2.0.1	<input type="checkbox"/>	Help
mmtty	<input type="checkbox"/>	Start C:\Program Files\DXLab Suite\MMTTY\mmtty.exe <input type="button" value="Sel"/>	?	<input type="checkbox"/>	

DXKeeper is Feature Rich

- Logging
- QSLing
- Award Tracking
- Multiple QTHs per log
- Import QSOs from file
- Export QSOs to file



- *You can start with just the log display – ‘dxk’*

DXKeeper

- Logging
- QSLing
- Award Tracking
- Multiple QTHs per log
- Import QSOs from file
- Export QSOs to file

DXKeeper 8.9.4 [CC,DXV,PV,WW] - AA6YQ.mdb : 18487 QSOs

Log QSOs | QSL | Check Progress | my QTHs | Import QSOs | Export QSOs

QSO: Jordan (00:15)

call: JY4NE | name: Ali | QTH: Aman

mode: RTTY | via: | tx freq: 14.087 | begin: 9/20/2010 18:37

sent: 599 | rcvd: 599 | tx band: 20M | rx freq: 14.086 | end: 9/20/2010 18:38

power: 1500 | code: 342 | DXCC: JY | entity: Jordan

Auxiliary
 QSL
 Online QSL
 Award
 Contest
 Propagation
 Details
 User-defined

New | Save | Undo | CBA | Delete | Report | Plot | 18487 | Adv | RAT | Capture | Config | Help

Call	Name	DXCC	Starting UTC	Mode	Freq	RX Freq	Band	Sent	Rcvd	QTH
IK5UAN	Roberto	I	9/19/2010 10:47	RTTY	14.087	14.087	20M	599	599	Monsummano Ter. Pt
HA5VZ	Miklos	HA	9/19/2010 10:51	RTTY	14.086	14.086	20M	599	599	Budapest
UX2SB	Vasil	UT	9/19/2010 10:52	RTTY	14.086	14.086	20M	599	599	Ivano-fr. Obl.
G3WCY	Brian	G	9/19/2010 10:53	RTTY	14.086	14.086	20M	599	579	Near Oxford
OH2LZI	Heikki	OH	9/19/2010 10:55	RTTY	14.086	14.086	20M	559	599	Pernaja
DD8HB	Rolf	DL	9/19/2010 10:57	RTTY	14.086	14.086	20M	599	599	Luebeck-schlutup
JH8JYV	Hide	JA	9/19/2010 21:43	CW	18.075	18.075	17M	599	599	Sapporo-city
PJ7/N9NA	John	PJ5	9/19/2010 21:59	CW	18.075	18.075	17M	559	589	
JT5DX	Chadraabal	JT	9/19/2010 23:23	CW	18.075	18.075	17M	599	599	Mongolia
RX0AT	Vit	UA	9/20/2010 01:01	RTTY	14.082	14.082	20M	599	599	Krasnoyarsk
KP4JFR	Jose	KP4	9/20/2010 01:11	RTTY	14.083	14.083	20M	599	599	Trujillo Alto, PR
JY4NE	Ali	JY	9/20/2010 18:37	RTTY	14.087	14.086	20M	599	599	Aman

Sort: UTC Call Adv | Filter: None

X | Call | DXCC | Date | Since | Sel | LotW | Broke | ~

DXKeeper Main Window: Online QSL Panel

DXKeeper 8.9.4 [CC,DXV,PV,WW] - AA6YQ.mdb : 18487 QSOs

Log QSOs QSL Check Progress my QTHs Import QSOs Export QSOs

QSO: Finland

call OH2LZL name Heikki QTH Pernaja

mode RTTY via tx freq 14.086035 begin 9/19/2010 10:55

sent 559 rcvd 599 tx band 20M rx freq 14.086042 end 9/19/2010 10:55

power 1500 code 224 DXCC OH entity Finland

QSL

sent Y R CFM date sent 10/7/2010 sent via WAZ vfy VUCC vfy

rcvd R R VFY date rcvd rcvd via IOTA vfy

msg

myQTH Wayland:IC-7800

addr Heikki Ahola
Tuomaantie 13A
FI-02180 Espoo
FINLAND

Online QSL

eQSL.cc

sent R CFM date sent

rcvd VFY date rcvd

Display member A

LotW

sent Y CFM date sent 9/19/2010

rcvd R VFY date rcvd

member Y

New Save Undo CBA Delete Report Plot 18480 Adv RAT Capture Config Help

Call	Name	DXCC	Starting UTC	Mode	Freq	RX Freq	Band	Sent	Rcvd	QTH
IK5UAN	Roberto	I	9/19/2010 10:47	RTTY	14.087	14.087	20M	599	599	Monsummano Ter. Pt
HA5VZ	Miklos	HA	9/19/2010 10:51	RTTY	14.086	14.086	20M	599	599	Budapest
UX2SB	Vasil	UT	9/19/2010 10:52	RTTY	14.086	14.086	20M	599	599	Ivano-fr. Obl.
G3WCV	Brian	G	9/19/2010 10:53	RTTY	14.086	14.086	20M	599	579	Near Oxford
OH2LZL	Heikki	OH	9/19/2010 10:55	RTTY	14.086	14.086	20M	559	599	Pernaja
DD8HB	Rolf	DL	9/19/2010 10:57	RTTY	14.086	14.086	20M	599	599	Luebeck-schlutup
JH8JYV	Hide	JA	9/19/2010 21:43	CW	18.075	18.075	17M	599	599	Sapporo-city
PJ7/N9NA	John	PJ5	9/19/2010 21:59	CW	18.075	18.075	17M	559	589	
JT5DX	Chadraabal	JT	9/19/2010 23:23	CW	18.075	18.075	17M	599	599	Mongolia
RX0AT	Vit	UA0	9/20/2010 01:01	RTTY	14.082	14.082	20M	599	599	Krasnoyarsk
KP4JFR	Jose	KP4	9/20/2010 01:11	RTTY	14.083	14.083	20M	599	599	Trujillo Alto, PR
JY4NE	Ali	JY	9/20/2010 18:37	RTTY	14.087	14.086	20M	599	599	Amman

Sort Filter: None

UTC Call Adv X Call DXCC Date Since Sel LotW Broke ~

Expanded Information Panels

- QSLing
- Award Tracking
- Color coded info
- LoTW
- eQSL
- Both

DXKeeper Capture Window

To improve the logging process-

Activate the CAPTURE window

DXKeeper Capture @ 10/7/2010 19:40 Z

call (7)	? VQ9LA	DXCC	? VQ9
RST sent/rcvd	559 579	mode	? CW
name	Larry	tx freq	? 7.002
QTH	Fpo Ap	rx freq	7.002
pri sub	? [dropdown]	sec sub	? [dropdown]
QSL requested	<input type="checkbox"/> via DIRECT QRZ	cont	AF [dropdown]
use bureau	<input type="checkbox"/> grid MI62	CQ -- ITU	39 41
LotW member	<input checked="" type="checkbox"/> IOTA AF-006	az -- path	52 S [dropdown]
eQSL AG	<input type="checkbox"/> pwr 100	myQTH ID	Wayland.IC-780C [dropdown]
comment	~		
contest mode	<input type="checkbox"/> ID [input] tx# -- rx# [input] [input]		
last QSO	8/28/2010 at 0101Z on 3.50798 in CW		
Conditions	QSB	TX antenna	[input]
CW speed	30	TX antenna ht	[input]
DXer	[dropdown]	TX antenna el	[input]
DXLab	[dropdown]	RX antenna	[input]

Lookup Spot End began 19:40 Z Clear Log

Manually Filled
Or
Auto filled from **SpotCollector**

Resized

DXKeeper Capture @ 10/7/2010 19:42 Z

call (7)	? VQ9LA	DXCC	? VQ9
RST sent/rcvd	559 579	mode	? CW
name	Larry	tx freq	? 7.002
QTH	Fpo Ap	rx freq	7.002

Lookup Spot End began 19:40 Z Clear Log

DXKeeper Capture Window

DXKeeper Capture @ 10/7/2010 19:42 Z

call (7) ? **VQ9LA** DXCC ? VQ9

RST sent/rcvd 559 579 mode ? CW

name Larry tx freq ? 7.002

QTH Fpo Ap rx freq 7.002

Lookup Spot End began 19:40 Z Clear Log

DXKeeper 8.9.4 [CC,DXV,SC,WW] - AA6YQ.mdb (filtered): 7 QSOs [QSL queue: 7 QSLs]

Log QSOs QSL Check Progress my QTHs Import QSOs Export QSOs

QSO: Chagos (2:48)

call VQ9LA name Larry QTH Fpo Ap

mode CW via DIRECT QRZ.COM tx freq 3.50798 beg 8/28/2010 01:01

sent 599 rcvd 599 tx band 80M rx freq 3.50798 end 8/28/2010 01:04

power 1500 code 33 DXCC VQ9 entity Chagos

Auxiliary
 QSL
 Online QSL
 Award
 Contest
 Propagation
 Details
 User-defined

New Save Undo CBA Delete Report Plot 7 Adv RAT **Capture** Config Help

Call	Name	DXCC	Starting UTC	Mode	Freq	RX Freq	Band	Sent	Rcvd	QTH
VQ9LA		VQ9	8/13/2003 01:57	RTTY	14.083		20M	59	59	
VQ9LA		VQ9	10/6/2003 01:16	CW	3.504		80M	559	599	
VQ9LA	Larry	VQ9	8/10/2009 01:57	CW	10.107	10.106	30M			Fpo Ap
VQ9LA	Larry	VQ9	9/17/2009 15:22	CW	18.087	18.085	17M			Fpo Ap
VQ9LA	Larry	VQ9	2/21/2010 01:12	CW	10.117	10.116	30M	599	599	Fpo Ap
VQ9LA	Larry	VQ9	8/8/2010 01:44	CW	7.002	7.002	40M	599	599	Fpo Ap
VQ9LA	Larry	VQ9	8/28/2010 01:01	CW	3.508	3.508	80M	599	599	Fpo Ap

Sort UTC Call Adv

Filter: Previous QSOs with VQ9LA

VQ9LA X Call DXCC Date Since Sel Lot/W Broke ~

DXKeeper: Logging

- Callbook access
 - The usual sources
 - Radio Amateur's Callbook CDROM
 - Buckmaster HamCall CDROM
 - HamCall.net
 - QRZ local database
 - **QRZ.com (free with advertising, or data subscription)**
(preferred with subscription)
 - Update logged QSOs en masse

Pathfinder: QSO Information from the Web


- Sources
 - **QRZ.com**
 - Country-specific callbooks (~100)
 - QSL sites (~40)
 - DX Summit spot archives
- 12 user-assignable search keys
- Captures callsigns selected via
 - DX Capture
 - DXView
 - DXKeeper
 - WinWarbler
 - SpotCollector

Pathfinder

Pathfinder 4.5.7



2008 X HC 9M2MRS Buck QRZ IK3QAR DXC OZ7C R 1 X 1 Config


RAC 9M2 CB WM7D K4UTE DXS '02 Google OZ7C IM Octavia Help

 **QRZ.COM**

Radio-A-Day Giveaway **Parkersburg Hamfest**
26 radios given away in September. Winners announced October 10th.
October 10th - 2501 Dudley Ave, Parkersburg, WV. Talk-in 147.255

Search Main Menu Logged in as: W4QN MGR 8 Sep 2009 19:54:54 UTC Log Out



The W5YI-Group Ham Radio BOOKSTORE
E-Z HANG
Great for Field Day!
Extra

 MALAYSIA

9M2MRS


Richard Smeets
54-7-12 Jalan Low Yat
11100 Batu Ferringhi, Penang island,
MALAYSIA

Lookups: 19981

Email: Use mouse to view.. **QSL: VIA PA0RRS, ALL MAIL DIRECT TO MALAYSIA IS TAKING MONEY OUT!**

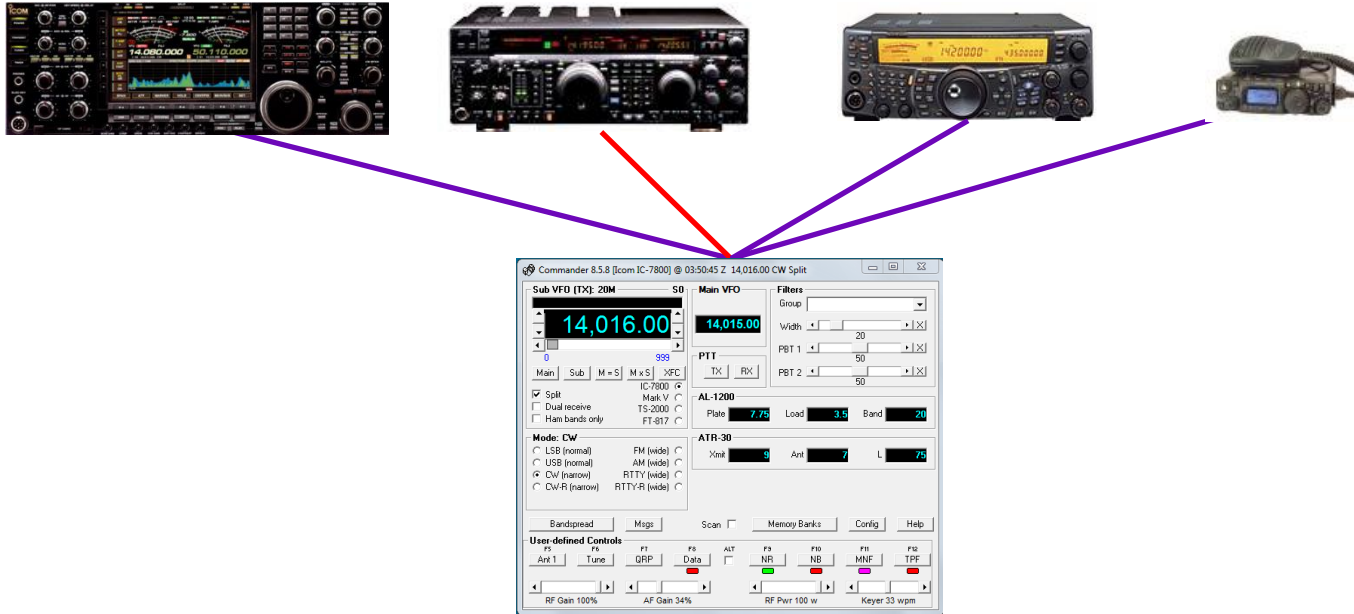
[Click for more detail...](#)

got license as DA1IE in Germany,
then moved to Netherlands with callsign pa0rrs (also qrv as PI5PVI)
former qrv as 9M6/PA0RRS from Sabah,
9M6/PA0RRS/8 from Sarawak,
9M6/PA0RRS/2 from Penang isl.
in 2005 i got the callsign changed into 9M2/PAoRRS (QTH Penang isl) and finaly
in 2006 i got a regular callsign 9M2MRS (qth Penang isl,,iota as-015).



Commander: *Rig Control*

Multiple Radio Support

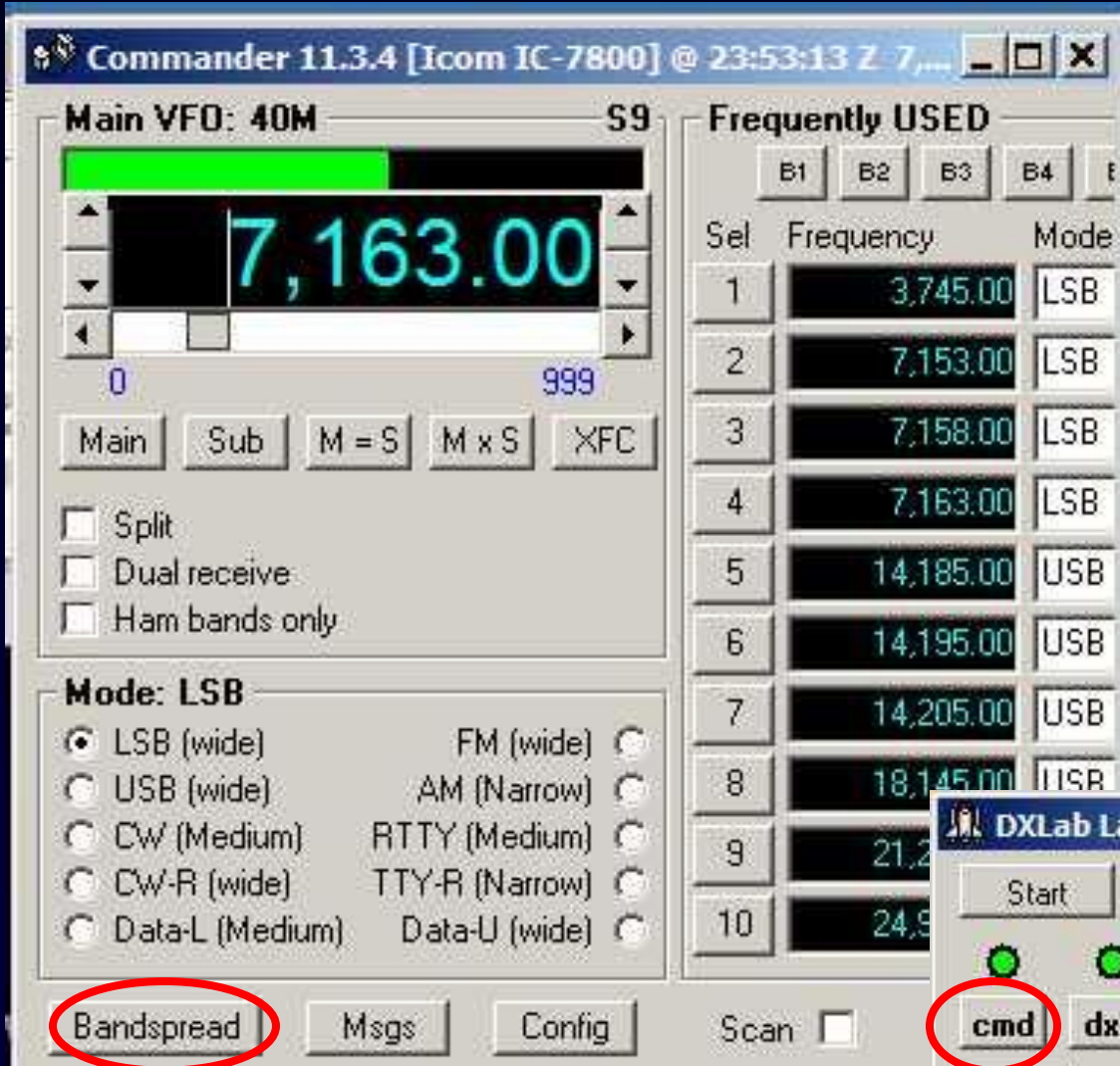


Select one of four *primary* radios

- By button click
- Automatically as a function of frequency

Transceiver Control

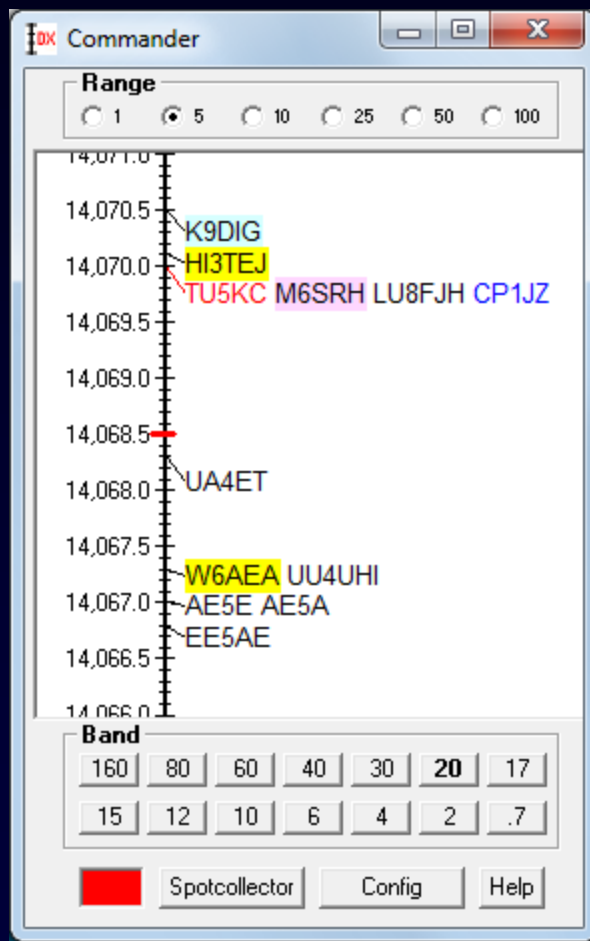
Activate COMMANDER – Rig control



Serial Port Connection to
Transceiver
DX Capture



SpotCollector: DX on Commander's Bandspread



A mouse click on
desired call will
QSY transceiver

SpotCollector: *DX Spot Database*

- Activate SpotCollector- *integrates Spot sources*
- Double-click Database,
 - QSY the transceiver (split, dual receive, QSX)
 - Rotate the antenna
 - Populate
 - DX
 - W
- Annour



soundcard

SpotCollector: DX Spot Database

- Activate SpotCollector- *integrates Spots*
- Double-click Database,
 - QSY the transceiver (split, dual receive, QSX)
 - Rotate the antenna
 - Populate
 - DXKeeper's Capture window
 - WinWarbler's QSO Info panel
- Announces needed spots via the soundcard



SpotCollector — *reports active DX*

- Connects to six spot sources
 - Four telnet clusters
 - DX Summit web cluster
 - Local packet cluster via external TNC
- Captures DX spots and places them into a database with **one entry for each active DX station**
- Highlights and announces “needed” stations
 - DXCC, Challenge, & CQ Marathon
 - WAZ
- Captures WWV spots

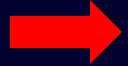
SpotCollector: DX Spot Database

- Discards bogus spots (B0ZO, SL1M, W3LPL, etc.)
- Combines spots of same DX station



- Filters database by

- Need
- Frequency
- Continent
- Callsign
- Band
- Origin
- Country
- Mode
- Distance from spotting station



- Colors database entries

- by Need
- by LotW participation and date of last upload
- By eQSL AG membership
- by Callsign matching

- Plots

- Spots and QSOs on DXView's world map
- Spots on Commander's bandspread

SpotCollector: DX Spot Database

SpotCollector 7.1.5 @ 2015-03-04 00:09 Z [CC,DXK,PF] 1366 entries (log: W4QN_v2.mdb)

WWW 03-03 1810 Z Outgoing spot Spot source status

SFI 130 History Call 7,163.0 Freq Cluster [Icons]

Q: 4 A 28 1 K Notes Local Report Stats Prop Config Help

Call	Pfx	Band	Time	Call	Pfx	Band	Freq	Mod	Beam	CQ	Enty	Notes	Ne	Mo	Last
KG4HF	KG4	80M	0009	KG4HF	KG4	80M	3,513.0	CW	147	8	Guantanamo Bay	up 1 599 Tnx			NA-E
3G0ZC	CE0Z	80M	0009	3G0ZC	CE0Z	80M	3,525.0	CW	179	12	Juan Fernandez	599 ++			SA
PJ7C	PJ7	17M	0009	PJ7C	PJ7	17M	18,145.0	SSB	115	8	Sint Maarten	Tnx 57 simplex Fe36du			SA
PR70FEB	PY	17M	0008	PR70FEB	PY	17M	18,074.9	CW	123	11	Brazil	CQ			SA
N7OG	K	10M	0007	N7OG	K	10M	28,026.9	CW	307	3	United States	CQ CQ	N		AS
PY3BSG	PY	10M	0007	PY3BSG	PY	10M	28,445.0	SSB	153	11	Brazil	EL06<>GG30SG Thx Back			NA-M
UA0FO	UA0	15M	0007	UA0FO	UA0	15M	21,301.0	SSB	332	19	Asiatic Russia	+UA9			NA-W
T88XH	T8	10M	0006	T88XH	T8	10M	28,480.0	SSB	310	27	Palau	simplex, good signal in ky.			NA-E
YV5EN	YV	40M	0006	YV5EN	YV	40M	7,007.0	CW	138	9	Venezuela	Edwin CQDX			SA
CN8KD	CN	30M	0006	CN8KD	CN	30M	10,112.0	CW	65	33	Morocco	CQ CQ			NA-E
ZD8D	ZD8	20M	0005	ZD8D	ZD8	20M	14,086.5	RTTY	109	36	Ascension Islan	RTTY UP			NA-W
HI8K	HI	17M	0005	HI8K	HI	17M	18,131.0	SSB	130	8	Dominican Repu				NA-E
ZD8D	ZD8	30M	0005	ZD8D	ZD8	30M	10,129.0	CW	109	36	Ascension Islan	Up 1			NA-M
WP2AA	KP2	30M	0005	WP2AA	KP2	30M	10,109.0	CW	120	8	US Virgin Islands	Usvi Virgin Isl.			EU
8R1AK	8R	17M	0004	8R1AK	8R	17M	18,133.9	SSB	132	9	Guyana	59 Tnx Pa	D		NA-E
KG4WV	KG4	17M	0004	KG4WV	KG4	17M	18,112.0	SSB	147	8	Guantanamo Bay	Guantanamo Bay USA			NA-M
PQ450RIO	PY	10M	0004	PQ450RIO	PY	10M	28,450.0	SSB	139	11	Brazil	57 in GG66wl TNX 73			SA
HP2BWJ	HP	10M	0003	HP2BWJ	HP	10M	28,470.0	SSB	176	7	Panama				NA-E
SV0XCA/5	SV5	30M	0003	SV0XCA/5	SV5	30M	10,114.3	CW	49	20	Dodecanese	Walentin Dodecanese			EU
BG6IMK	BY	10M	0003	BG6IMK	BY	10M	28,120.0	CW	346	24	China	cq cq NA SA			AS
FG/F6ITD	FG	15M	1839	FG/F6ITD	FG	15M	21,082.1	RTTY	117	8	Guadeloupe	RTTY			NA-M
ZD8D	ZD8	15M	1839	ZD8D	ZD8	15M	21,233.0	SSB	109	36	Ascension Islan	up 5			NA-E
GM4AGL	GM	17M	1839	GM4AGL	GM	17M	18,075.5	CW	38	14	Scotland				EU
ZD8D	ZD8	12M	1839	ZD8D	ZD8	12M	24,910.0	RTTY	109	36	Ascension Islan	up 2 good ears.			NA-M
PP5BI	PY	10M	1838	PP5BI	PY	10M	28,499.0	SSB	150	11	Brazil	cq			EU

Sort: First Call Last Freq Rcv Az

Filter: Band and Mode

Audio Age LotW eQSL Mthn [Icons]

Color codes: verified unvrkd B or M LotW unneeded unvrkd counter eQSL AG unconfmrd special tag LotW & eQSL

eQSL

LoTW

Both

Dbf Click, Call, DX logged

SpotCollector 7.1.5 @ 2015-03-04 06:09 Z [CC,DXK,PF] 1366 entries (log: W4QN_v2.mdb)

W4QN 03-03 1810 Z Outgoing spot 7,163.0 Freq Cluster Spot source status

Call	Prefix	Band	Time	Call	Prefix	Band	Freq	Mod	Beam	CQ	Entity	Notes	Need	Mo	Last
KG4HF	KG4	80M	0009	KG4HF	KG4	80M	3,513.0	CW	147	8	Guantanamo Bay	up 1 599 Tnx			NA-E
3G0ZC	CE0Z	80M	0009	3G0ZC	CE0Z	80M	3,525.0	CW	179	12	Juan Fernandez	599++			SA
PJ7C	PJ7	17M	0009	PJ7C	PJ7	17M	18,145.0	SSB	116	8	Sint Maarten	Tnx 57 simplex Fe36du			SA
PR70FEB	PY	17M	0008	PR70FEB	PY	17M	18,074.9	CW	123	11	Brazil	CQ			SA
N7OG	K	10M	0007	N7OG	K	10M	28,026.9	CW	307	3	United States	CQ CQ	N	AS	US
PY3BSG	PY	10M	0007	PY3BSG	PY	10M	28,448.0	SSB	153	11	Brazil	EL66<>GG30S3 Thx Back			NA-M
UA0FO	UA0	15M	0007	UA0FO	UA0	15M	21,301.0	SSB	332	19	Asiatic Russia	+UA0			NA-W
T8BXH	T8	10M	0006	T8BXH	T8	10M	28,480.0	SSB	310	27	Palau	simplex, good signal in ky.			NA-E
YU5EN	YU	40M	0006	YU5EN	YU	40M	7,007.0	CW	139	9	Venezuela	Edwin CQDX			SA
CN8KD	CN	30M	0006	CN8KD	CN	30M	10,112.0	CW	65	33	Morocco	CQ CQ			NA-E
ZD8D	ZD8	20M	0005	ZD8D	ZD8	20M	14,085.5	RTTY	109	36	Ascension Islam	RTTY UP			NA-W
H8K	H1	17M	0005	H8K	H1	17M	18,131.0	SSB	130	8	Dominican Repu			NA-E	
ZD8D	ZD8	30M	0005	ZD8D	ZD8	30M	10,129.0	CW	109	36	Ascension Islam	Up 4			NA-M
WP2AA	KP2	30M	0005	WP2AA	KP2	30M	10,109.0	CW	120	8	US Virgin Islands	Uvvi Virgin Isl.			EU
8R1AK	8R	17M	0004	8R1AK	8R	17M	18,133.9	SSB	132	9	Guyana	59 Tnx Pa	D		NA-E
KG4HW	KG4	17M	0004	KG4HW	KG4	17M	18,112.0	SSB	147	8	Guantanamo Bay	Guantanamo Bay USA			NA-M
PQ450RI0	PY	10M	0004	PQ450RI0	PY	10M	28,450.0	SSB	139	11	Brazil	97 in GG66wi TNX 73			SA
HP2BWJ	HP	10M	0003	HP2BWJ	HP	10M	28,470.0	SSB	176	7	Panama				NA-E
SV0XCA5	SV5	30M	0003	SV0XCA5	SV5	30M	10,114.3	CW	49	20	Dodecanese	Walentin Dodecanese			EU
BG9JMK	BY	10M	0003	BG9JMK	BY	10M	28,420.0	CW	346	24	China	cq cq NA SA			AS
FQ1RFTD	FG	15M	1939	FQ1RFTD	FG	15M	21,082.1	RTTY	117	9	Guadeloupe	RTTY			NA-M
ZD8D	ZD8	15M	1939	ZD8D	ZD8	15M	21,233.0	SSB	109	36	Ascension Islam	up 5			NA-E
GM4AGL	GM	17M	1939	GM4AGL	GM	17M	18,075.5	CW	35	14	Scotland				EU
ZD8D	ZD8	12M	1939	ZD8D	ZD8	12M	24,910.0	RTTY	109	36	Ascension Islam	up 2 good ears.			NA-M
PP5BI	PY	10M	1938	PP5BI	PY	10M	28,499.0	SSB	150	11	Brazil	cq			EU

Sort: First Call, Last Freq, Rev Az. Filter: Band and Mode. Color codes: verified, unverified, unconfirmed, special tag, etc.

DXKeeper Capture @ 10/7/2010 19:42 Z

call (7) ? VQ9LA DXCC ? VQ9

RST sent/rcvd 559 579 mode ? CW

name Larry tx freq ? 7.002

QTH Fpo Ap rx freq 7.002

Spot End began 19:40 Z Clear Log

Commander 11.3.4 [icom IC-7800] @ 23:53:13 Z

Main VFO: 40M S9

7,163.00

Frequently USED

Sel	Frequency	Mode
1	3,745.00	LSB
2	7,153.00	LSB
3	7,158.00	LSB
4	7,163.00	LSB
5	14,185.00	USB
6	14,195.00	USB
7	14,205.00	USB
8	18,145.00	USB
9	21,295.00	USB
10	24,945.00	USB

Mode: LSB (wide), USB (wide), CW (Medium), Data-U (medium), FM (wide), AM (Narrow), RTTY (Medium), TTY-R (Narrow), Data-U (wide)

DXLab Launcher 2.0.0

Start Minimize Restore Terminate

cmd dxk dxv pf pv sc ww

Config Help

DXKeeper 8.9.4 [CC,DXV,SC,WW] - AA6YQ.mdb (filtered): 7 QSOs [QSL queue: 7 QSLs]

Log QSOs QSL Check Progress my QTHs Import QSOs Export QSOs

QSO: Chagos (2:48)

call VQ9LA name Larry QTH Fpo Ap

mode CW via DIRECT QRZ.COM tx freq 3.50798 begin 8/28/2010 01:01

sent 599 rcvd 599 tx band 80M rx freq 3.50798 end 8/28/2010 01:04

power 1500 code 33 DXCC VQ9 entity Chagos

Call	Name	DXCC	Starting UTC	Mode	Freq	RX Freq	Band	Sent	Rcvd	QTH
VQ9LA		VQ9	8/13/2003 01:57	RTTY	14.083		20M	59	59	
VQ9LA		VQ9	10/6/2003 01:16	Cw	3.504		80M	599	599	
VQ9LA	Larry	VQ9	8/10/2009 01:57	Cw	10.107	10.106	30M			Fpo Ap
VQ9LA	Larry	VQ9	9/17/2009 15:22	Cw	18.087	18.085	17M			Fpo Ap
VQ9LA	Larry	VQ9	2/21/2010 01:12	Cw	10.117	10.116	30M	599	599	Fpo Ap
VQ9LA	Larry	VQ9	8/8/2010 01:44	Cw	7.002	7.002	40M	599	599	Fpo Ap
VQ9LA	Larry	VQ9	8/28/2010 01:01	Cw	3.508	3.508	80M	599	599	Fpo Ap

Sort: UTC Call Adv. Filter: Previous QSOs with VQ9LA

Pathfinder 4.5.7

QRZ.COM

9M2MRS Buck QRZ

26 radio spots away in September Hamfest announced October 10th

October 10th - 2501 Dudley Ave, Parkersburg, WV

Logged in as: W4QN MGR 8 Sep 2009 19:54:54 UTC Log Out

9M2MRS

Lookups: 19981

Email: Use mouse to view... QSL: VIA PA0RRS, ALL MAIL DIRECT TO MALAYSIA IS TAKING MONEY OUT!

Click for more detail...

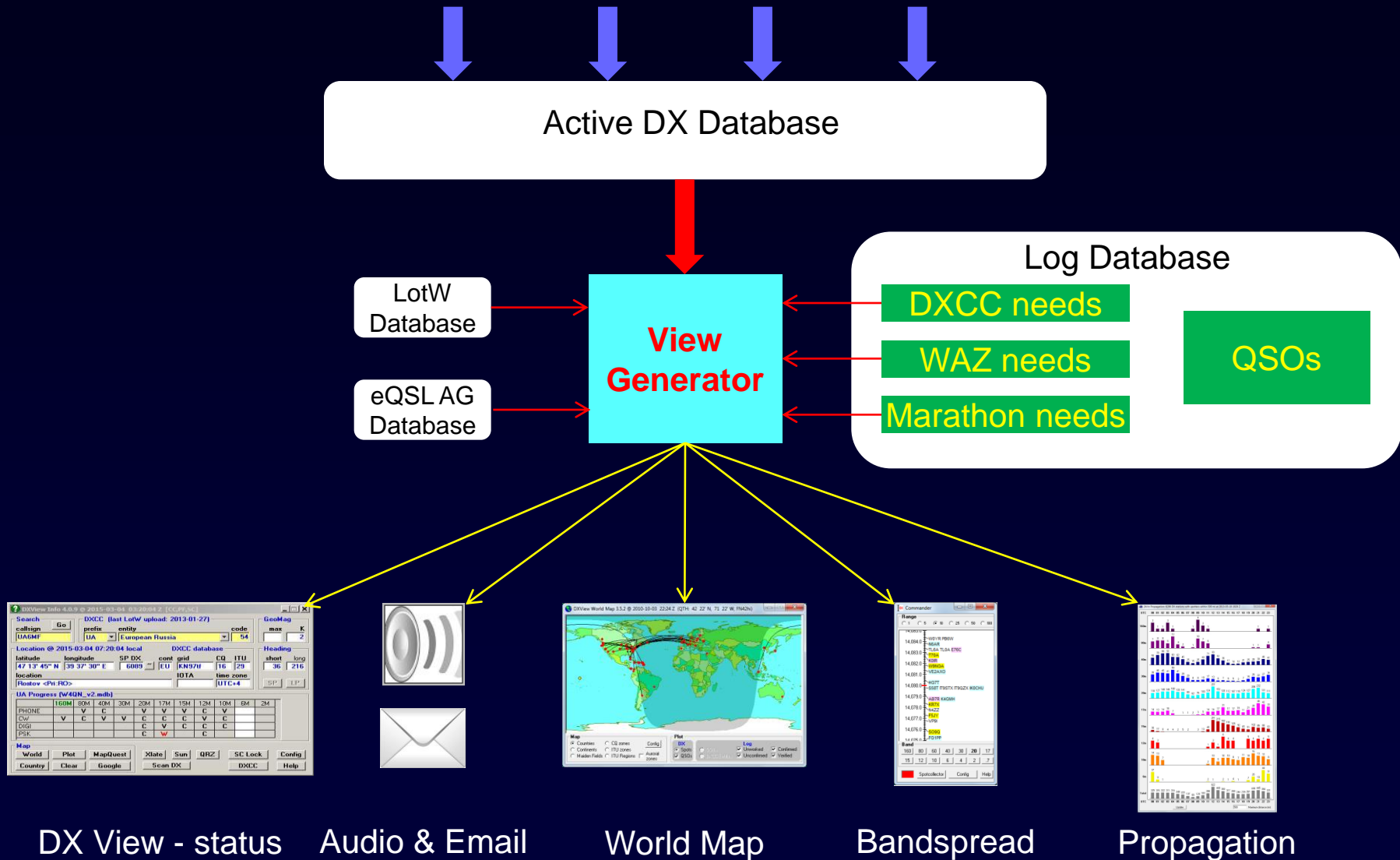
got license as DA1IE in Germany,

then moved to Netherlands with callsign pa0rrs (also qrv as PI5PVI)

former qrv as 9M6/PA0RRS from Sabah,
9M6/PA0RRS/8 from Sarawak,
9M6/PA0RRS/2 from Penang isl.

in 2005 I got the callsign changed into 9M2/PA0RRS (QTH Penang isl) and finally
in 2006 I got a regular callsign 9M2MRS (qth Penang isl, tota as-015).

More Features and Enhancements



DX View - status

Audio & Email

World Map

Bandspread

Propagation

Better DXing Through Software

DXing with DXLab

2013-05-19 v1.1

DX View – Band/Mode Status at a Glance

The screenshot shows the DXView Info 4.0.9 interface. The search field contains 'UA6MF'. The DXCC dropdown is set to 'European Russia' with code '54'. The location is 'Rostov <Pri:RO>' with coordinates 47°13'45" N, 39°37'30" E. The DXCC database shows '6089' SP DX, 'EU' cont, 'KN97tf' grid, '16' CQ, and '29' ITU. The time zone is 'UTC+4'. The 'UA Progress' table is circled in red.

	160M	80M	40M	30M	20M	17M	15M	12M	10M	6M	2M
PHONE		V	C		V	V	V	C	V		
CW	V	C	V	V	C	C	C	V	C		
DIGI					C	V	C	C	C		
PSK					C	W		C			

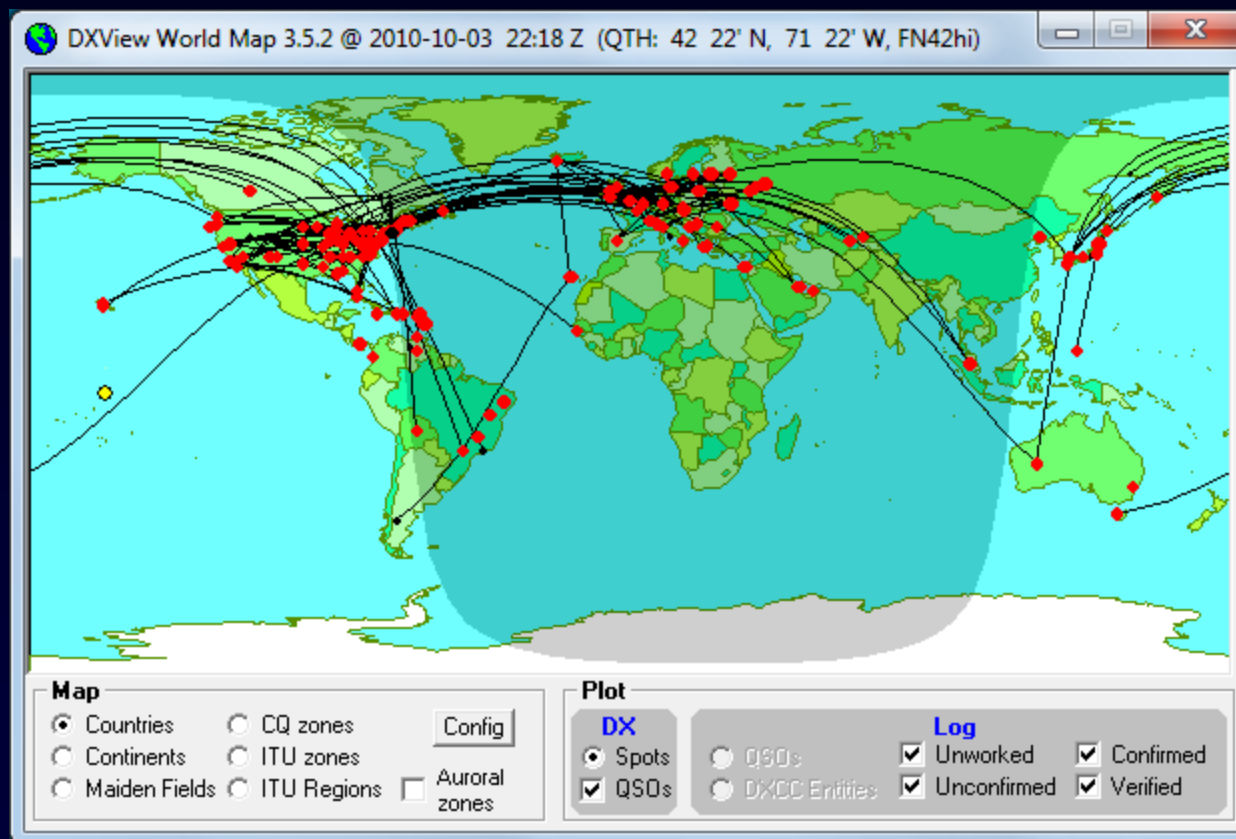
Better DXing Through Software

Audio and Email DX Announcements

Creation of a new Active DX Database Entry for a needed DX station can trigger

- **an audio announcement (callsign, “counter”, band, mode)**
- **an outgoing email message (which can initiate a text message)**

SpotCollector: Plotted active DX

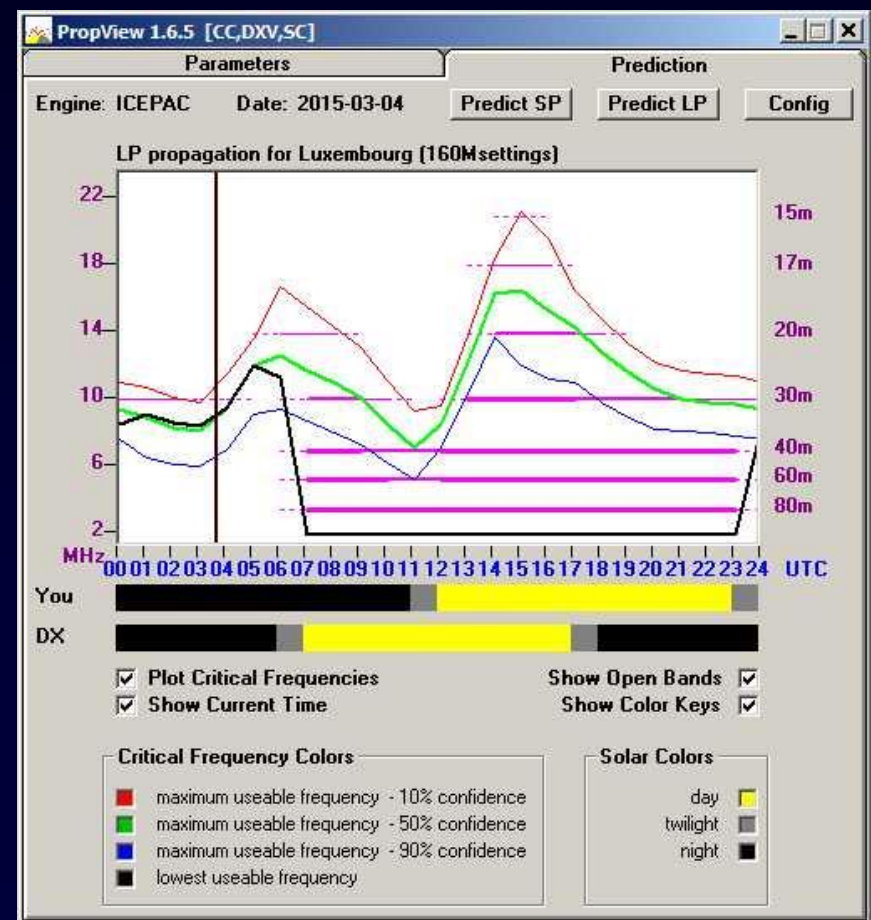
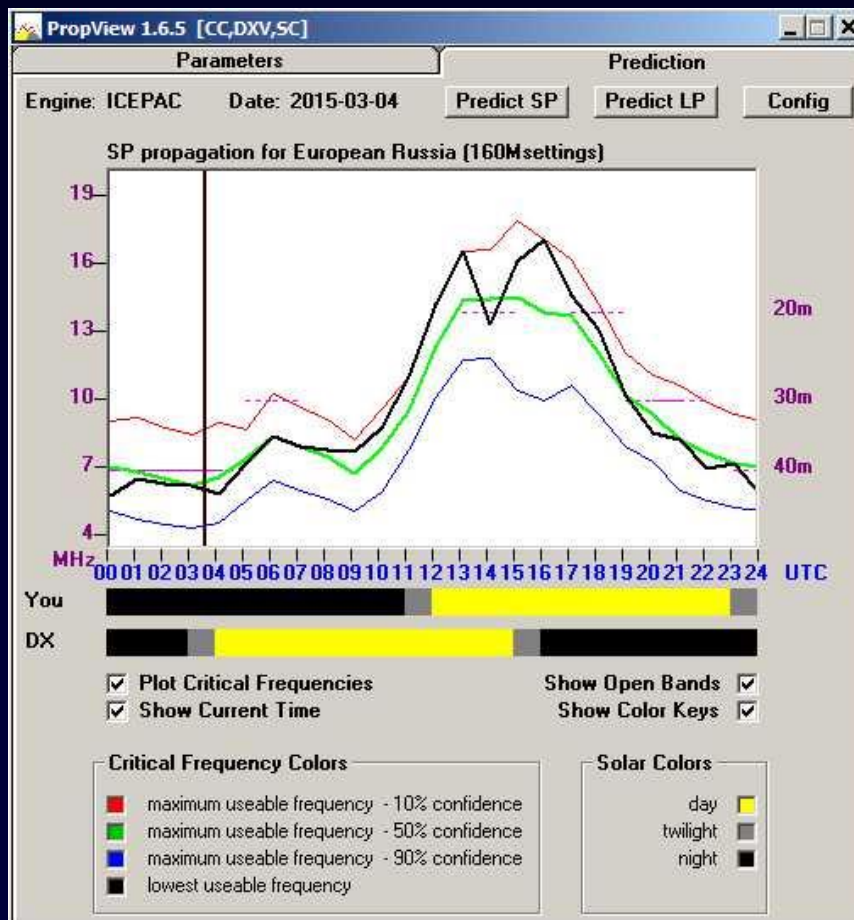


Better DXing Through Software

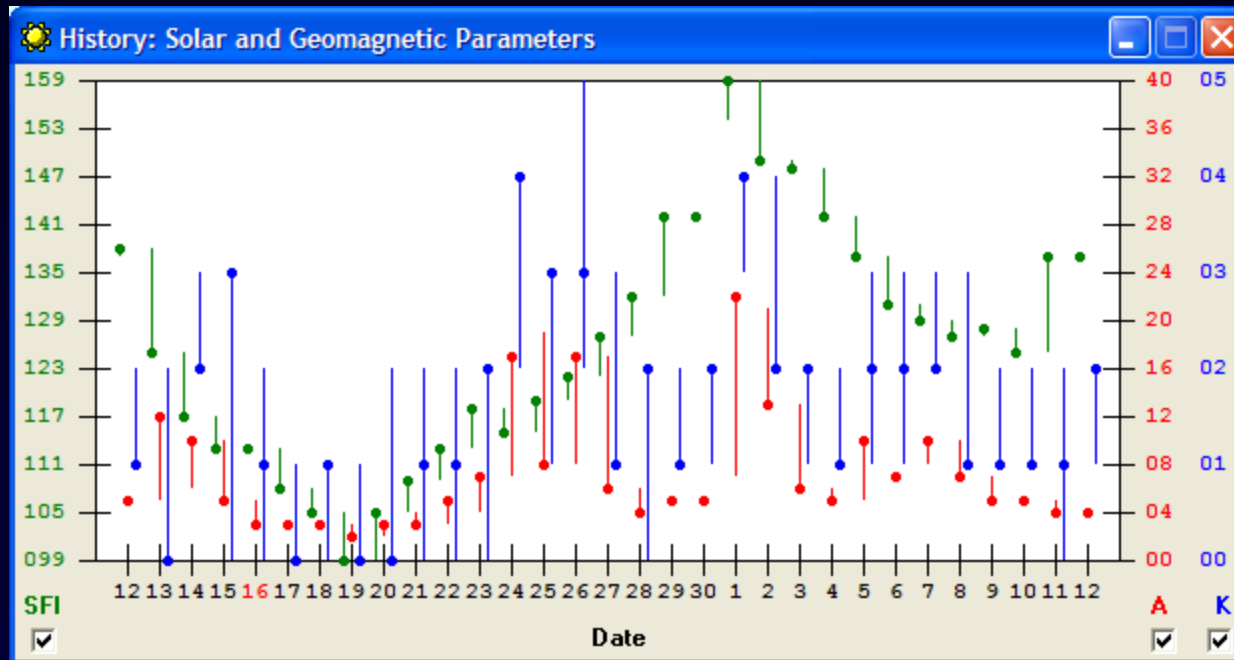
PropView

Predicts propagation
Monitors propagation

Forecast Short- & Long-path Propagation

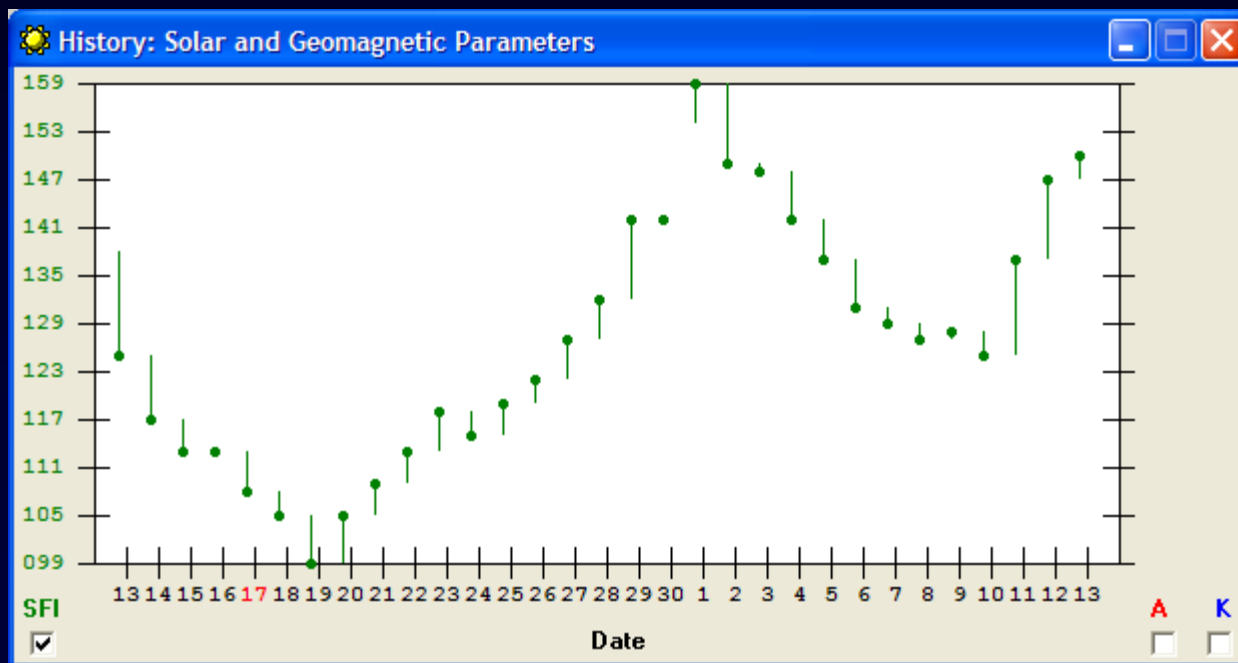


Check the Solar & Geomagnetic Indices

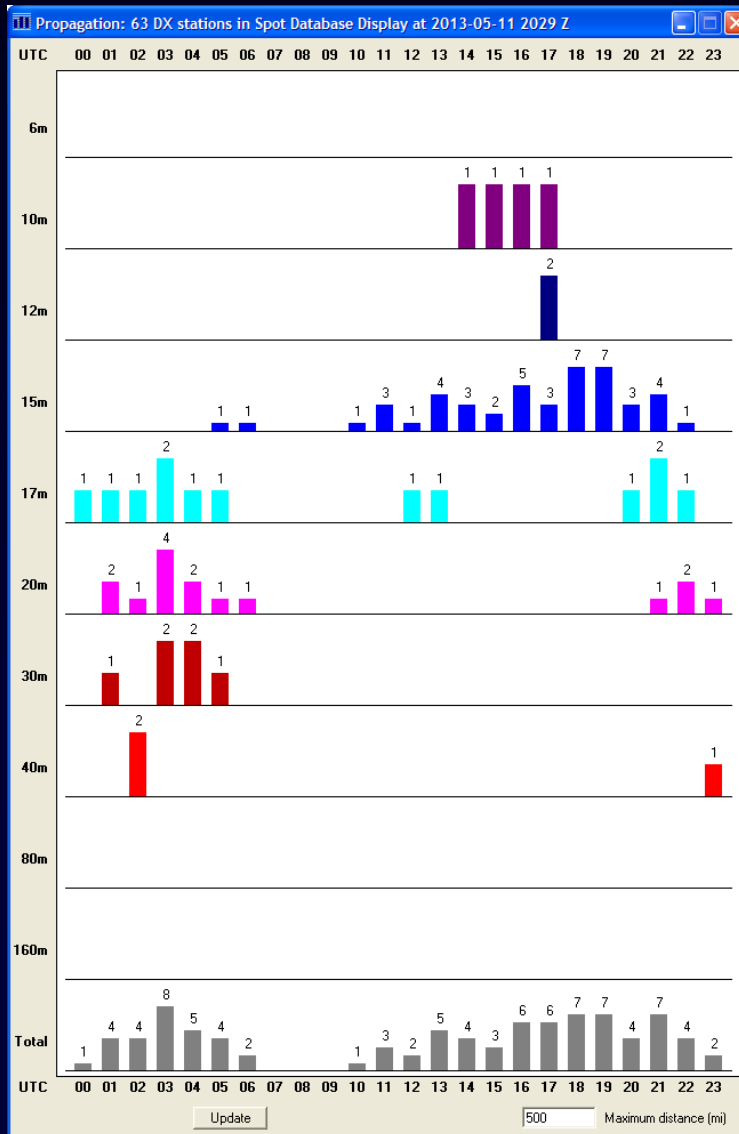


SFI 30 day History...

SFI Looking Good!



Actual Propagation by Band & Time-of-Day



spotted by stations
less than 500 miles
from your QTH

Clublog does this
very well also, and is
based on your region
at
'ZONE' Level

DXKeeper: Award Tracking

- **DXCC* & Challenge***
 - generates submission
 - tracks verification
- CQ DX*
- **CQ DX Marathon**
- CQ Field*
- Gridsquares
- IOTA*
- TOPLIST*
- VUCC*
- Worked All Continents*
- Worked All Europe
- Worked All Prefixes*
- **Worked All Zones***
- Worked All British Areas
- Worked All Canadian Provinces
- Worked All French Departments
- Worked All German DOKs
- Worked All Holyland Areas
- Worked All Hungarian Counties
- Worked All Italian Provinces
- Worked All Japanese Cities
- Worked All Japanese Guns
- Worked All Japanese Prefectures
- Worked All Russian Oblasts
- Worked All Russian Districts
- **Worked All US States***
- Worked All US Counties*

* identifies needed confirmations

“Real Time Award Tracking

The screenshot displays the DXKeeper 12.7.4 software interface. The title bar reads "DXKeeper 12.7.4 [CC,PF,DXV,SC,PV] - W4QN v2.11.11 24113 QSOs". The main window is divided into several sections, each with a set of buttons for tracking progress and submissions. The "Check Progress" button in the top navigation bar is circled in red. Red asterisks are placed next to the "DXCC, Challenge, & TopList", "CQ WAZ", "CQ DX Marathon: Unlimited CW", and "Club Log: W4QN" sections. The "Club Log: W4QN" section also has its "Upload" button circled in red. The interface includes sections for DXCC, Challenge, & TopList; CQ WAZ; CQ WPX; IOTA; CQ DX Marathon: Unlimited CW; CQ DX; WAC reports; VUCC; Maidenhead reports; WAS; North American progress reports; JARL progress reports; SRR Russian Oblast reports; RDA Russian District reports; Other progress reports; and a bottom bar with buttons for Card Aging, QSL Stats, Uniques, First QSOs, Reports, Scripts, Recompute, Clear Select, Adv, Config, and Help.

DXKeeper 12.7.4 [CC,PF,DXV,SC,PV] - W4QN v2.11.11 24113 QSOs

Log QSOs QSL **Check Progress** my QTHs Import QSOs Export QSOs

DXCC, Challenge, & TopList **CQ WAZ** **CQ WPX**

Progress Submission QSL Kind Progress Submission Summary Progress Submission Summary

Realtime Compare Credits Realtime Realtime

IOTA **CQ DX Marathon: Unlimited CW** **CQ DX**

Progress Submission Realtime Progress Submission Realtime Progress

WAC reports **VUCC** **Maidenhead reports**

Progress Progress Submission Realtime CQ Fields Grids

WAS **North American progress reports** **JARL progress reports**

Progress Submission Realtime USA-CA Canada WAJA JCC JCG AJA

SRR Russian Oblast reports **RDA Russian District reports** **Other progress reports**

Progress Submission Progress Submission DDFM DOKs Holyland KDN

Club Log: W4QN WAB WABP WAE WAHUC

Upload Home WAIP WITU

Card Aging QSL Stats Uniques First QSOs Reports Scripts Recompute Clear Select Adv Config Help

WinWarbler - RTTY and Other Digital Modes

WinWarbler 6.8.5 for AA6YQ @ 2010-10-04 20:04 Z [CC,DXK,DXV,SC]

local: 2010-10-04 21:04

QSO Info (Receive Pane 0)

Call ? LX8RTTY rst S rst R Name Andy DXCC LX Begin Log X
QSL Via CQ 14 ITU 27 QTH Schiffflange Cont EU End Spot ↑
Buro Grid JN39am Pri sub Sec sub
LotW IOTA Az Path S Comment

Xcvr Freq
RX 14,087.21
TX 14,087.21
Config Help

E ISAVE FUN WITVTHE RADIO
MORE INFOS ON QRZ.COM AND FACEBOOK.COM
VE5TLW DE LX8RTTY
PSE K

S

Macros: rtty sample

F5 CQ sh F5	F6 Call 40m sh F6	F7 Over 30m sh F7	F8 SK log 20m sh F8	ALT	F9 ur rpt 17m sh F9	F10 tu log qrz? 15m sh F10	F11 de mycall 12m sh F11	F12 mycall (3) 10m sh F12
-------------------	----------------------------	----------------------------	------------------------------	-----	------------------------------	-------------------------------------	-----------------------------------	------------------------------------

Operating Mode

CW PSK31
 Phone PSK63
 RTTY PSK125

RTTY receive (soundcard)

Freq: 14,085.085 Signal level & squelch 41

AFC Notch
 BPF DPF
 Reverse Def Opt Profile AA6YQ

RTTY transmit (soundcard)

Freq: 14,085.085 net tune

Reverse F2 Start F4 Stop Esc Abort

Tuning Display

Vert height 2.0
Horiz zoom 1
Horiz pan

14084 14085 14086 14087

WinWarbler

- CW transmission
 - software-generated
 - WinKey
 - external modem
- Phone voice keyer
- Logging
 - Built-in minilog
 - Automatically logs to DXKeeper if running
- Transceiver control via Commander
 - Logs correct frequencies
 - One-click QSY to optimize tone within transceiver bandwidth
 - RX-TX switching

Another Feature

DXKeeper: *QSLing*

- Generates QSL cards and Labels
- Generates Address labels or prints envelopes
- Support for eQSL.cc and ARRL's LotW
 - One-click upload
 - One-click download and update
 - Independent tracking

DXKeeper: *handles the “Paperwork”*

- Finding QSL routes
- Requesting confirmation via QSL cards, LotW, eQSL.cc
- Tracking confirmation requests
- Updating objectives as confirmations are received
- Submitting confirmations for Award Credit

Automate “paperwork” to make more time for DXing

QSL Route Discovery

Pathfinder 4.7.6: results from VK Callbook for VK3ZL

2010 X HC VK3ZL Buck QRZ IK3QAR DXC OZ7C R 1 X 1 Config

← RAC VK CB eHAM DB0SDX 425DXN Google OZ7C IM Daily DX Help

acma.gov.au

Register of Radiocommunications Licences

Client Details

Client Number	128363
Contact Name	Robert William Briggs
Postal Address	11 Turnley St MERINO VIC 3310

[\[New Client Search \]](#)

Licences Held

Results 1 - 1 of 1 licences.

Licence No	Licence Type	Licence Category	Callsign	Ship name	Status
182834	Amateur	Advanced	VK3ZL		Issued

QSL Card Printing

DXKeeper Print Preview

Next Print Left margin: .117 in Width: 10.333 in Top margin: .117 in Height: 8.267 in

Dave Bernstein
25 Glezen Lane
Wayland, MA 01778

AA6YQ

Middlesex County
FN42hi
USA

Confirming a 2X QSO with AP2TN

Date	Time	Freq	Mode	RST	QSL?	Notes
02-Sep-10	2058Z	10.102	CW	599	please!	

printed by DXLab freeware www.dxlabsuite.com

Dave Bernstein
25 Glezen Lane
Wayland, MA 01778

AA6YQ

Middlesex County
FN42hi
USA

Confirming a 2X QSO with A51A

Date	Time	Freq	Mode	RST	QSL?	Notes
10-Sep-10	2354Z	7.005	CW	599	please!	

printed by DXLab freeware www.dxlabsuite.com

Dave Bernstein
25 Glezen Lane
Wayland, MA 01778

AA6YQ

Middlesex County
FN42hi
USA

Confirming a 2X QSO with JT5DX

Date	Time	Freq	Mode	RST	QSL?	Notes
19-Sep-10	2323Z	18.075	CW	599		

printed by DXLab freeware www.dxlabsuite.com

Dave Bernstein
25 Glezen Lane
Wayland, MA 01778

AA6YQ

Middlesex County
FN42hi
USA

Confirming 2X QSOs with VQ9LA

Date	Time	Freq	Mode	RST	QSL?	Notes
17-Sep-09	1522Z	18.087	CW	599		
21-Feb-10	0112Z	10.117	CW	599		
08-Aug-10	0144Z	7.002	CW	599		
28-Aug-10	0101Z	3.508	CW	599		

printed by DXLab freeware www.dxlabsuite.com

QSL Card Printing

Wayland Massachusetts
Middlesex county

AA6YQ

Grid: FN42hi
42 20' N
71 25' W

Confirming a 2X QSO with 5T0JL via ON8RA

Date	Time	Freq	Mode	RST	QSL?	Notes
29-Jul-11	1906Z	24.894	CW	579		



printed by DXLab freeware

www.dxlabsuite.com

QSL Label Printing

Three column, stock Avery Label stock

DXKeeper Print Preview

Next Print Left margin: .117 in Width: 8.267 in
Top margin: .117 in Height: 10.333 in

AA6YQ cfms a 2X QSO with AP2TN

Date	Time	Freq	Mode	RST
02-Sep-10	2058Z	10.102	CW	599

AA6YQ cfms a 2X QSO with A51A

Date	Time	Freq	Mode	RST
10-Sep-10	2354Z	7.005	CW	599

AA6YQ cfms a 2X QSO with JT5DX

Date	Time	Freq	Mode	RST
19-Sep-10	2323Z	18.075	CW	599

AA6YQ cfms 2X QSOs with VQ9LA

Date	Time	Freq	Mode	RST
17-Sep-09	1522Z	18.087	CW	
21-Feb-10	0112Z	10.117	CW	599
08-Aug-10	0144Z	7.002	CW	599

AA6YQ cfms 2X QSOs with VQ9LA

Date	Time	Freq	Mode	RST
28-Aug-10	0101Z	3.508	CW	599

QSL Automation

More QSLing Benefits

- Generates QSL cards and Labels
- Generates Address labels or prints envelopes
- **Support for eQSL.cc and ARRL's LotW**
 - **One-click upload**
 - One-click download and update
 - Independent tracking
- **Automatic upload to Club Log**
- Generates files for
 - BV, QSL Maker, QSL Design and Print
 - Online QSL Request Service (OQRS), Global QSL

DXing With DXLab

You already have a computer Logging Program

Upgrading Existing Logger With DXLAB

Direct import of many logging programs-

DXBase, Logger 32, Logic, N3FJP, WinLog32,
WriteLog, N1MM (realtime xfr)

and

Standard ADIF or Tab-delimited files

DXing With DXLab

DXLab also has the ability to

1. download your DXCC Credits from the ARRL web site
2. automatically link DXCC Credits and QSOs that exactly match (callsign, entity, band, mode ,date)
3. manually link DXCC Credits and QSOs that don't exactly match
4. generate a "credit-only QSOs" for each unlinked DXCC Credit

AND ALSO FROM 'CLUBLOG'

Program Support

Drivers:

1. User-driven iterative development

- **Open Yahoo group with 4000+ participants**
- **Defect repairs get highest priority**; goal is < 24 hours
- Public enhancement lists
- Frequent releases (several per month)

2. Easy to Use **and** Powerful

- Primarily for DXers
- Secondarily for casual operators

3. Runs on Windows NT, 2000, XP, Vista, 7, 8 and **10**

- and Mac in a virtual machine
- and Linux in a virtual machine

DXLab: Better DXing Through Software

DXKeeper 8.9.4 [CC,DXV,SC,WW] - AA6YQ.mdb : 18487 QSOs

Log QSOs | QSL | Check Progress | my QTHs | Import QSOs | Export QSOs

QSO: Jordan

call JY4NE name QTH

mode RTTY via tx freq 14.086765 begin 9/20/2010 18:37

sent 599 rcvd 599 tx band 20M rx freq 14.086764 end 9/20/2010 18:37

power 1500 code 342 DXCC JY entity Jordan

Call	DXCC	Starting UTC	Band	Mode	Sent	Rcvd	Name
JT5DX	JT	9/19/2010 23:23	17M	CW	599	599	hadraabal
RXQAT	UA	9/20/2010 01:01	20M	RTTY	599	599	Vit
KP4JFR	KP4	9/20/2010 01:11	20M	RTTY	599	599	Jose
JY4NE	JY	9/20/2010 18:37	20M	RTTY	599	599	

SpotCollector 5.3.9 @ 2010-10-04 19:59 Z [CC,DXK,DXV,WW] (log: AA6YQ.mdb)

WVWV 10-04 1806 Z | Outgoing spot | Spot source status

Call 14,086.2 Freq Cluster

Callsign	Pfx	Freq	Band	Mode	LastTime	Notes	NAE	NAM	NAW	SA	EU	AF	AS	OC	UN	LastOrig	Source
PS7DX	FY	14,018.3	20M	CW	10/4/2010 19:59	CQ 8 dB 21 WPM	Y	Y	Y	Y	Y	Y	Y	Y	Y	NA-E	N4ZR-#
SQ9CNS	SP	3,541.0	80M	CW	10/4/2010 19:59	CQ 16 dB 19 WPM					Y					EU	DL5Q-#
LA3TQ	LA	14,017.8	20M	CW	10/4/2010 19:59	CQ 18 dB 23 WPM					Y					EU	S5ZK-#
IK0RCD	I	14,025.6	20M	CW	10/4/2010 19:59	CQ 13 dB 18 WPM	Y	Y	Y							NA-M	K8ND-#
9A/SP9EVP	9A	7,017.0	40M	CW	10/4/2010 19:59	CQ 21 dB 26 WPM					Y					EU	DL5Q-#
UA9MA	UA0	1,822.5	160M	CW	10/4/2010 19:59	CQ 10 dB 25 WPM					Y					EU	EI6IZ-#

DXView World Map 3.5.2 @ 2010-10-04 19:57 Z (QTH: 42 22' N, 71 22' W, FN42h)

Map: Countries, CQ zones, Continents, ITU zones, Maiden Fields, ITU Regions, Auroral zones

Plot: DX, Spots, QSOs, DXCC Entities, Unworked, Confirmed, Unconfirmed, Verified

Log: AA6YQ.mdb

WinWarbler 6.8.5 for AA6YQ @ 2010-10-04 19:59 Z [CC,DXK,DXV,SC]

QSO Info (Receive Pane 0)

Call ? EY7AD 1st S 1st R Name Rakhim DXCC EY Begin Log X

QSL Via DIRECT -1 Cq 17 ITU 30 QTH 735700 Cont AS End Spot

Buro Grid MN30 Pri sub Sec sub

LotW IOTA Az Path S Comment

local: 2010-10-05 00:59 Xcvr Freq 14,086.19

TX 14,086.19

QU0TH00 DX CQ DX DE SV1PAS SV1PAS PSE K

DS1PAUSSVPAS DEHPFF,PD1BPSE K...

))JTCQ DX CQ DX DE SV1PAS SV1PAS PSE EU00E0SCQ DX CQ DX DE SV1PAS SV1PAS PSE K

S MSQVAS UV1PAS DE PD1ANB,PD1ANB PSE K...90R2 ORZ ORZ DE SV1PAS SV1PAS PSE K

Commander 8.5.8 [Icom IC-7200] @ 19:59:42 Z 14,086.19 LSB

VFO A: 20M | VFO B: 21,008.10

14,086.19

Filters: Group normal

Width: 0

PBT 1: 50 | PBT 2: 50

PTT: Rcvng | TX | RX

AL-1200 | Plate 7.75 | Load 4 | Band 20

Mode: LSB

LSB (normal) | FM (wide) | USB (normal) | AM (wide) | CW (narrow) | RTTY (wide) | CW-R (narrow) | RTTY-R (wide)

DX Commander

Range: 1 5 10 25 50 100

14,088.5

14,088.5 EI7BFB

14,087.5 EA4AHE

14,087.0 UR7ITU

14,086.5

14,086.0 PF7DKW

14,085.5 LX8RTTY

14,084.5 SP9GKJ

14,084.0

Band: 160 80 60 40 30 20 17 | 15 12 10 6 4 2 7

Spotcollector | Config | Help

Macros: rtty sample

F5 CQ | F6 Call | F7 Over | F8 SK log | ALT | F9 ur rpt | F10 tu log grz? | F11 de mjcsl | F12 mjcsl (3)

sh F5 80m | sh F6 40m | sh F7 30m | sh F8 20m | sh F9 17m | sh F10 15m | sh F11 12m | sh F12 10m

RTTY receive (soundcard)

Freq: 14,084.065 | Signal level & squelch 61

AFC | Notch | BPF | DPF | Reverse | Def | Opt

RTTY transmit (soundcard)

Freq: 14,084.065 | net

Reverse | Start | Stop | Abort

Operating Mode

CW | PSK31 | Phone | PSK63 | RTTY | PSK125

Tuning Display

Vert height 2.0 | Horiz zoom 1 | Horiz pan

Downloading and Installing DXLab Applications

DXLab applications run on **Windows NT, 2000, XP, Vista, and 7** in both 32-bit and 64-bit flavors. Some DXLab applications can be individually run on **Windows 95, 98, and 98SE**.

Using virtual machines, DXLab applications can also be run on **Linux and Macintosh**:

- [DXLab on Linux](#)
- [DXLab on Macintosh](#)

Getting Started with DXLab
[Documentation](#)
[Availability Announcements](#)
[Bridges, Gateways, and Extenders](#)
[Distribution Sites](#)
[Articles and Presentations](#)
[DXLab Resources](#)

FREE!

Before installing your first DXLab application, install the Launcher

The **DXLab Launcher** automates the installation of new DXLab applications and upgrading of already-installed DXLab applications. If you're exploring DXLab and you have other applications on your PC, or if you're a long-time DXLab user who has never installed the Launcher, installing the Launcher will make it easy to install new DXLab applications and keep them up to date as upgrades are released. Clicking the **Install Launcher** button below will download and install the DXLab Launcher on your PC. Step-by-step guides to installing the Launcher are available in [HTML for browsing](#) and in [PDF for printing](#).

Do not click the **Install Launcher** button if the Launcher is already installed on your PC. If you're not sure, [here's how to check](#).

If the Launcher is already installed on your PC, you should [determine if a newer version is available](#) and, if so, [upgrade](#) it.

By default, each DXLab application will be installed in a subfolder of


```
c:\dxlab
```

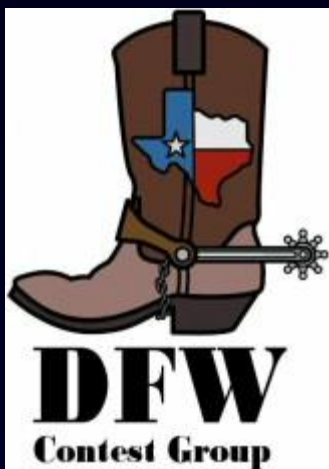
but you can specify an alternate location if desired. The Launcher will ensure that each DXLab application is installed in a separate folder, e.g.

- c:\dxlab\dxkeeper
- c:\dxlab\winwarbler
- c:\dxlab\pathfinder

If you decide to install DXLab within c:\program files\ or c:\program files (x86) then

- If your PC is running Windows 7, login to an account with Administrator privileges to install or run DXLab applications
- If your PC is running Vista, [login to the account named Administrator](#) to install or run DXLab applications





Thanks –

I'm a DXer
I CQ DX
I chase DX
I work DX
I QSL DX
I DX

Dave N3BUO